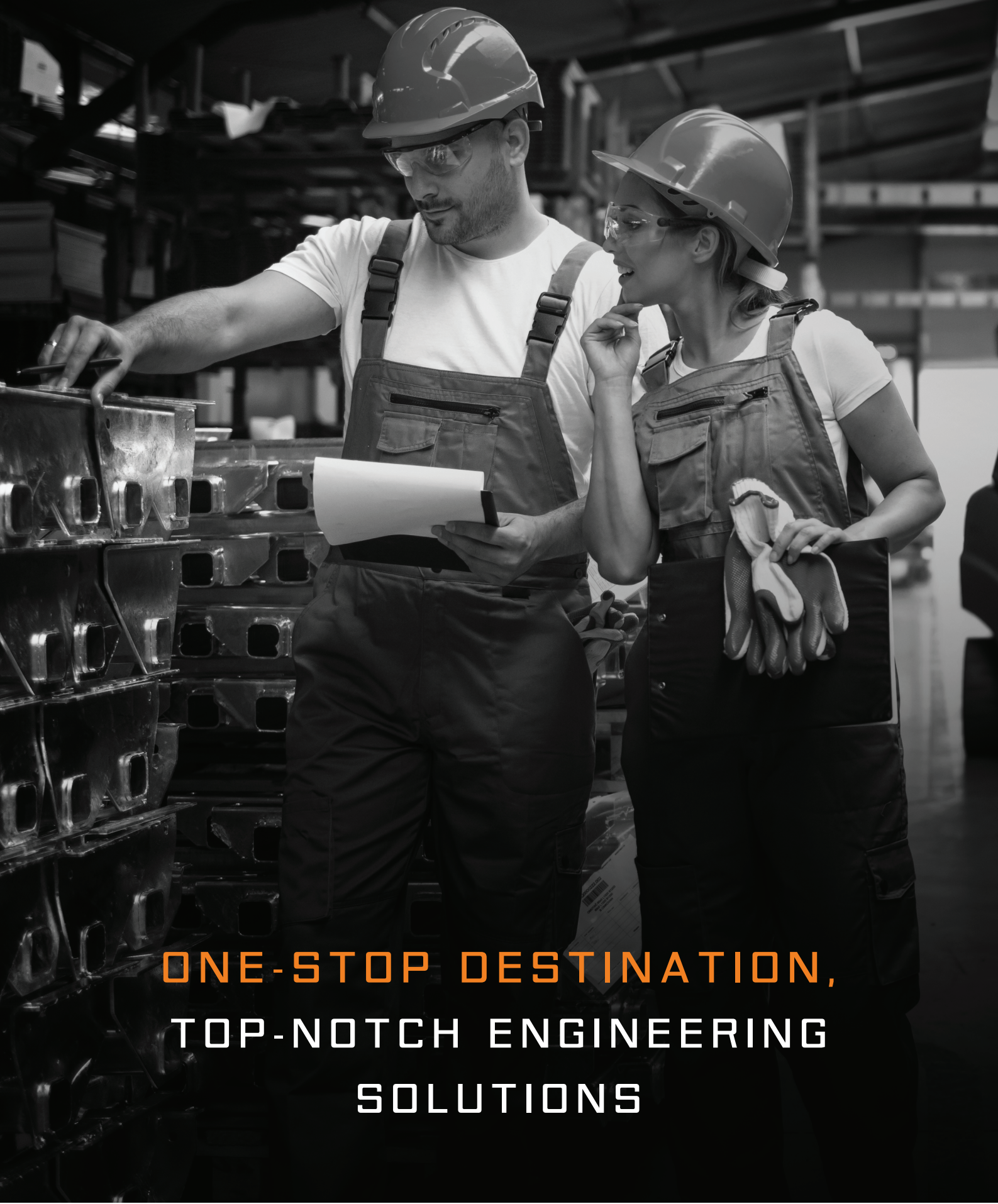




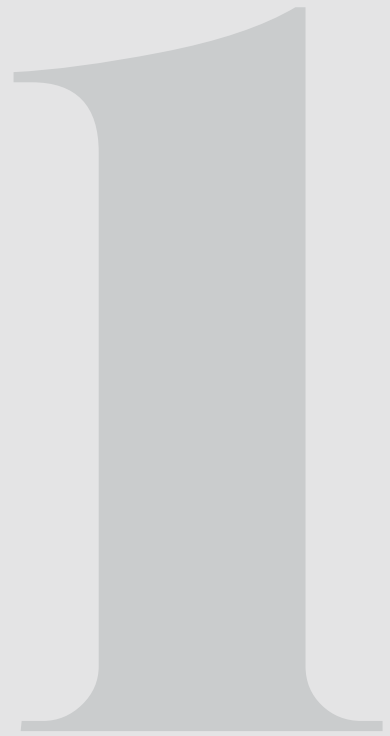
AMBICA
Engineers & Lubricants



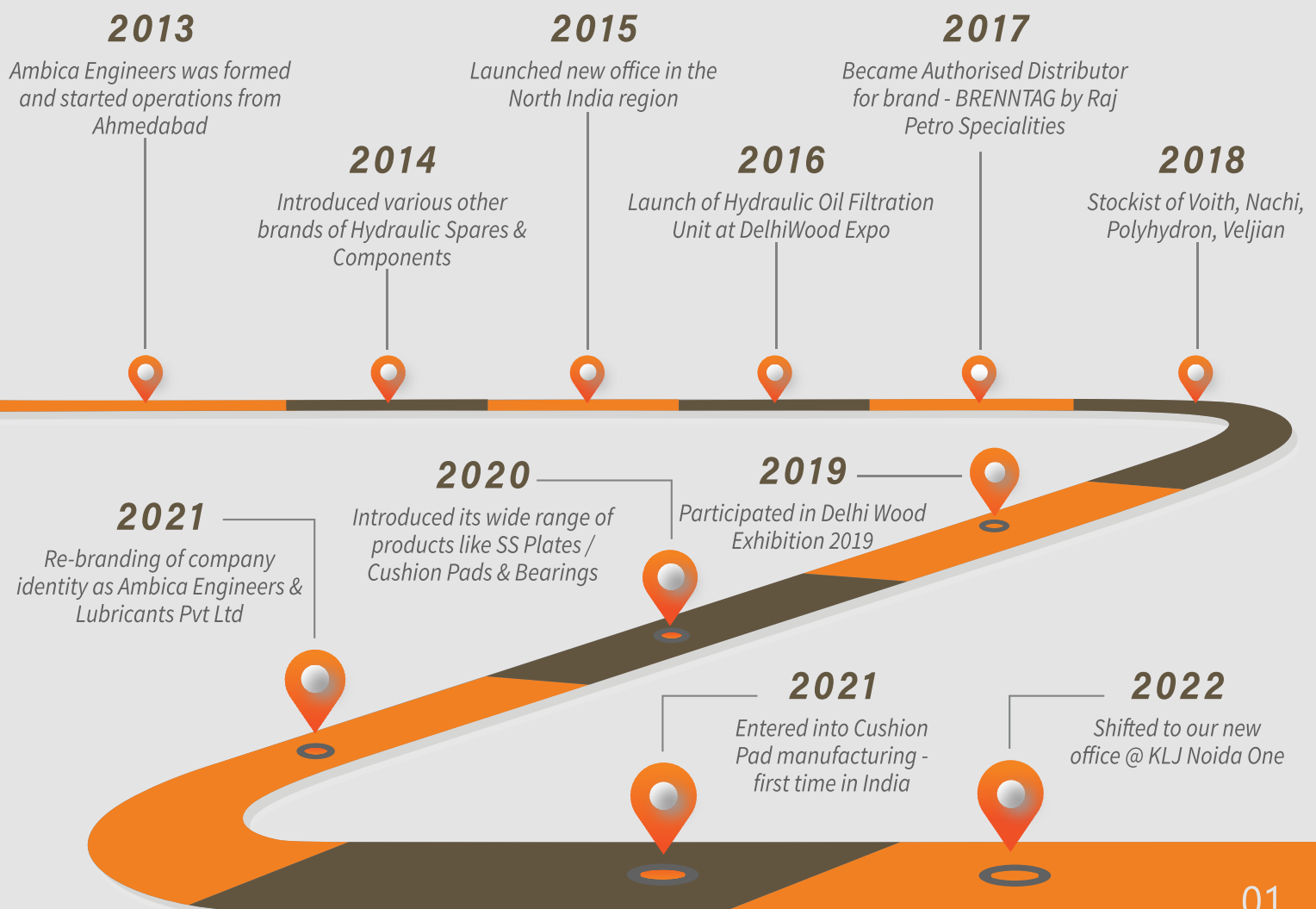
**ONE-STOP DESTINATION,
TOP-NOTCH ENGINEERING
SOLUTIONS**

Introduction

Since 1982, Ambica has set the highest benchmarks in quality and workmanship. Today we are one of the leading suppliers of hydraulic spare parts, lubricant products, and wood panel machinery in India, satisfying some of the most reputed companies of the country. We are associated with some of the top companies across trade to offer them a complete range of Hydraulic Spare Parts, Particle board & MDF Production Line with superior functionality and the highest performance industry standards.



A JOURNEY OF UNSTOPPABLE GROWTH & EXCELLENCE



Content

01

Introduction

Details Of Company Establishment

Pumps & Motors

Details Of Pumps And Motors For Industrial & Automation Segment

03

Hydraulic Valves

Hydraulic Vales For All Segments

02

Customers

High Valued Customers For The Reference From The Last Long

04

Key Products

Particle Boards And MDF Production Line

06

Our Presence

Our Offices And Services

05

Follow us



INDUSTRIAL PRODUCTS

HYDRAULIC PUMPS & MOTORS



A10VSO

Variable Displacement Pump
Sizes 18 to 140

Features:

Variable pump with axial piston rotary group in swash -plate design for hydrostatic drives in open-circuit, 2 drain ports.
Low noise level.
Long service life.
Favourable power/weight ratio.
Versatile controller range.
Short control time.
Flange connection to SAE metric
Good suction characteristics
The through drive is suitable for adding gear pumps and axial piston pumps upto the same size.



"CY" series

Fixed Displacement Pump/Motor
Sizes 1.5 to 400

Features:

The CY14-1B Hydraulic Pump is of axial piston type with hydrostatic film lubrication of bearing. It makes a feature of compact size, light weight, high efficiency, longer life, simple construction and easy maintenance.
It is suitable for machine tools, forging, metallurgy engineering, mining and other machinery and other hydraulic transmission system.
It can also be used as hydraulic motor by just changing the motor oil pan.



A2F

Fixed Displacement Pump/Motor
Sizes 10 to 500

Features:

Fixed displacement pump/motor A2F is an axial piston of bent axis design, suitable for use in both open and closed circuit hydrostatic drives. Output flow is proportional to the flow of fluid through the pump. Output speed is proportional to the flow of fluid through the motor and inversely proportional to motor displacement. Output torque increase with the pressure drop across the motor between the high and low pressure sides.



A2FO/A2FM

Fixed Displacement Pump/Motor
Sizes 10 to 200

Features:

Fixed displacement pump A2FO of axial piston bent axis design is made suitable for hydrostatic drives in open circuits, suitable for use in mobile or industrial application, output flow is proportional to drive speed and displacement, the drive shaft bearing are designed to give the service life expect in these areas of operation, careful selection for the displacements offered, permit sizes to be matched to practically every application.



A4VSO

Variable Displacement Pump
Sizes 40 to 1000

Features:

Variable pump with axial piston rotary group in swash -plate design for hydrostatic drives in open-circuit. Flow is proportional to drive speed and displacement.
Excellent suction performance.
Low noise level
Long service life
Variable through drive options
Visual swivel angle indicator
Suitable for variable-speed drives.

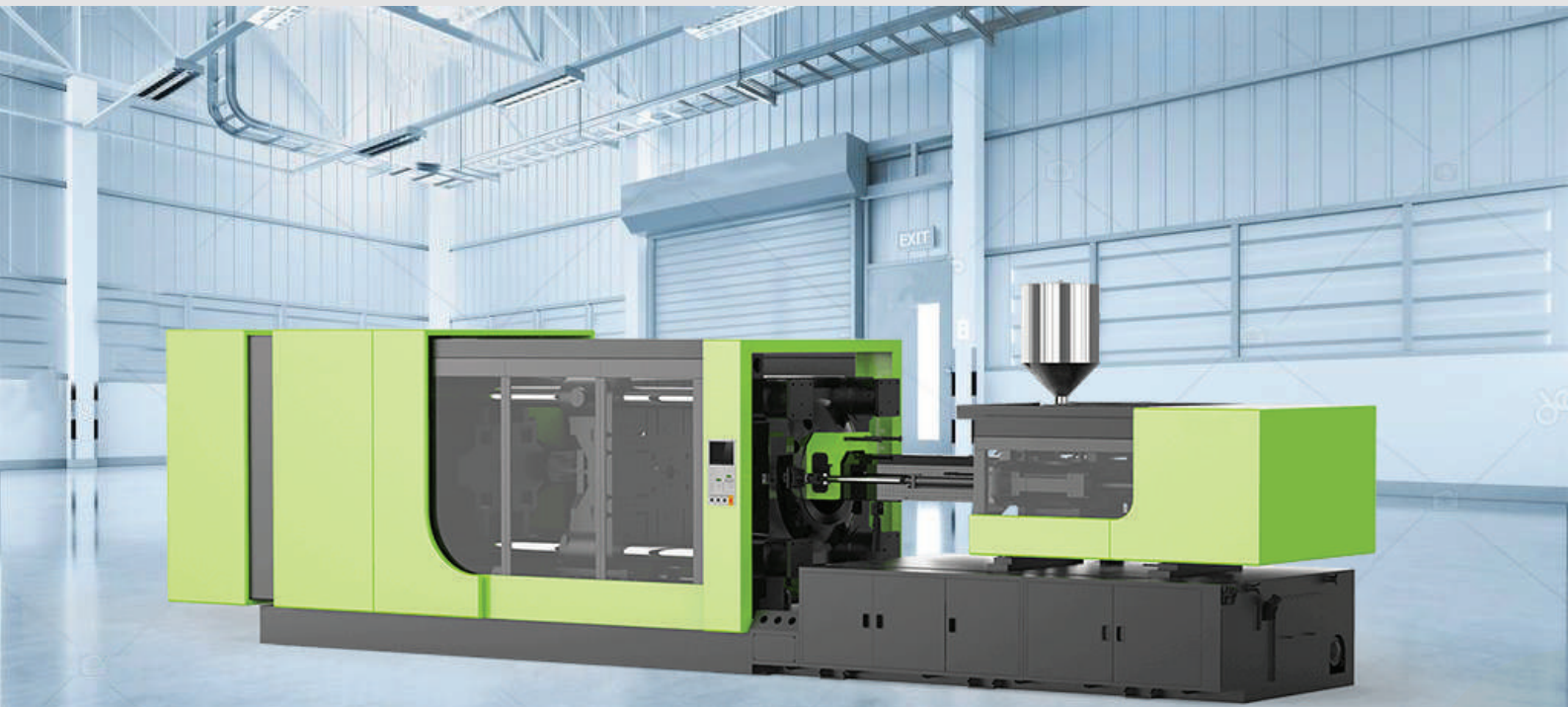


High Pressure pumps or pressure applications and others

Quality
stay in touch

INDUSTRIAL PRODUCTS

HYDRAULIC PUMPS & MOTORS



INJECTION MOLDING MACHINE



“A” series

Variable Displacement Pump
Inbuilt PQ Block system
Sizes 10 to 145

Features:

Variable pump with axial piston rotary group in swash -plate design for hydrostatic drives in open-circuit.
2 drain ports.
Low noise level.
Long service life.
Favourable power/weight ratio.
Versatile controller range.
Short control time.
The through drive is suitable for adding gear pumps and axial piston pumps upto the same size.



“AR” series

Variable Displacement Pump
Sizes 10 to 22

Note:

This is a compact sized variable displacement piston pump as compared to “A” series pump. It is also lighter in weight than “A” series smaller pumps.
It's a low noise pump at full its peak flow and high reliability.
Easy to assemble and clean appearance. Application for CNC lathe machines, Bending machines, Punch hydraulic press, high efficiency machines.



IPVAP

High Pressure Internal Gear Pump
Sizes 3.5 to 125

Features:

IPVAP High-pressure internal gear pumps for variable speed drives.
Very good controllability and pressure hold function
Very good pulsation behavior
Very high overall efficiency
Low noise emission
Multiple flow capable
Peak pressures apply for 15 % of operating time with a maximum cycle time of 1 minute.
Due to production tolerances, the pump volume may be reduced by up to 1.5 %.



Z-TVC

Prefill Valve
Sizes 40, 80, 90, 100, 125, 150

Features:

Z-TVC series of prefill valve allows transfer large volume of fluid from tank or cylinder in short intervals. It can cut down oil movement in valves and piping.
Pilot control pressure oil opens and closes the prefill valves on demand according to the application and the hydraulic circuit.

Size	50	80	90	100	125	150
Type	Z-TVC					
Max operating pressure (Bar)	250					
Flow (L/min)	2500					

HYDRAULIC ORBITAL MOTORS



OMP & OMR

Orbital motor with spool valve
Sizes 50 to 400

Note:

This series of motor, with its shell made of ductile cast iron of adequate intensity, can be applied to situations with less load and interval operation, widely to agriculture, forestry, plastics, machine tools and min machines, such as mould height adjustment of the injection molding machine, the cleaner, the sawmill, the worktable, etc.
The output shaft, with the deep groove ball bearing, can bear certain axial force and radial force.



OMS

Orbital motor with disk valve
Sizes 80 to 400

Note:

OMS is one type of high torque low speed hydraulic motor, with high efficiency and long life. OMS has a wide speed range, high starting torque and rotating stable at high speed. Compact and light, it can be connected to working machine directly, adapted to all kinds of low speed heavy load facilities. OMS hydraulic motors are widely applied in agriculture machinery, fisting machinery, plastic industry, mining and construction machinery.



OMT

Orbital motor with disk valve
Sizes 40 to 1000

Note:

Roller bearing permit high radial loads.
Use high pressure capacity shaft seal. Wide variety of mounting flanges, shafts, and displacement provides design flexibility.
Direction of shaft rotation and speed can be controlled easily and smoothly.
Best combination of efficiency and economy in heavy duty application.



OMV

Orbital motor with disk valve
Sizes 40 to 1000

Note:

Roller bearings permit high radial loads. Stronger shaft and bigger displacement, hence higher torque. Wide range of mounting flanges, shafts, and displacement provides design flexibility.
Direction of shaft rotation and speed can be controlled easily and smoothly.
Best combination of efficiency and economy in heavy duty applications.

**FOR INDUSTRIAL
& MOBILE
APPLICATIONS**

HYDRAULIC GEAR PUMPS



TRACTORS



FORKLIFTS



HARVESTERS



HG0.5

High pressure gear pumps
Flow 0.9 to 2.00cc

Note:

Unique sealing design to operate up to 250 bar continuous, special alloy bush with unique lock design for maximum rigidity modified gear tooth to lower operating torque, 100% testing on computerized test bench, long service life, pump in "V" option available to operate up to 10 degree celcius and 120 degree celcius, "G"-BSP ports as per ISO 228/1 as standard and other threaded and flange port available, new principle of hydraulic gap compensation.

HG0.5 is a compact sized gear pumps which are used in the compact sized applications.

HG2 series is a hot selling gear pumps. Single and double pumps are available in the combination of all sizes of HG2 series of gear pumps.



HG2

High pressure gear pumps
Flow 3 to 30cc

QUALITY,
SOMETHING
FOR EVERYONE

INDUSTRIAL PRODUCTS



PV2R
Fixed vane pumps
Sizes 4 to 136

Features:
PV2R Series vane pumps with high pressure and lower noise are high-performance products, which are developed and domestically produced by the reputed company, featured by advanced performance, reasonable structure, good creditability, lower noise, ultra-low pulse and stable quality and so on. Precisely made, the product can be used in the equipment with high precision and low noise, and is widely used in cutting, plastic, leather, forging and engineering machinery fields, etc.



VP
Variable vane pumps
Sizes 08 to 40

Features:
VP series variable displacement vane pumps are the products with limiting pressure, equipped with both pressure flow adjustment facilities. The outlet flow of the pump can regulate itself automatically according to the load, by which the outlet power and the working speed are in tune with the load. The pump is characterized by high efficiency, saving energy, safety and credibility and so on, and can be used in the hydraulic system for volumetric regulation, for instance, cutting machine tools, and so on.



PUMPING UNIT
Motor Plus Pump Assembly
(Variable Vane Pump / Gear pump)

Features:
High efficiency -Combining high efficiency motor (complies with IE3 requirement) can save 20% more energy compared to normal motors and pumps.
Low temperature.
High volumetric efficiency and low leakage will cause less heat generation and improves the accuracy.
Space - saving
Long Working life
Low noise

Models	Fluid Flow (cm ³ /rev)	Adjustable Pressure Range (Bar)	Max Flow (L/min)
1HP + VP-08	08	15 ~ 60	6
1HP + VP-12	12		8
2HP + VP-12	12		8
2HP + VP-20	20		14
2HP + VP-30	30		20
2HP + VP-40	40		27
3HP + VP-30	30		20
3HP + VP-40	40		27

HYDRAULIC PUMPS & MOTORS

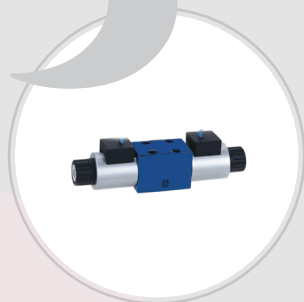


**FOR MACHINE TOOL
APPLICATIONS**

in a service more than decades...



HYDRAULIC DIRECTIONAL VALVES



WE

Directional control valve
Sizes 5, 6, 10

Features:

Direct operated directional spool valve, solenoid actuated, in heavy-duty configuration
Port pattern as per DIN 24340 form A
For subplates, see data sheet RE 45052 (order separately)
Wet-pin AC or DC solenoids with removable coil
Spool position monitoring, optional
Optional auxiliary operating device

Size	5	6	10
Type		WE	
Max operating pressure (Bar)	250	350	315
Flow (L/min)	14	80	120



WEH/WH

Pilot operated directional valve
Sizes 10, 16, 25, 32

Features:

Types of actuation (internal or external pilot control):
Electro-hydraulic (type WEH)
Hydraulic (type WH)
For subplate mounting
Porting pattern according to ISO 4401
Spring or pressure centering, spring end position or hydraulic end position
Manual override
Switching time adjustment

Size	10	16	25	32
Type		WEH/WH		
Max operating pressure (Bar)		350		
Flow (L/min)	160	300	650	1100



WMM

Directional valve with hand lever
Sizes 6, 10

Features:

Direct actuated directional spool valve with hand lever
With spring return or dedent
Sub plate mounting
Porting pattern according to DIN 24340 form A (without locating hole)
Porting pattern according to ISO 4401-03-02-0-05 and ISO 4401-05-04-0-05 (with locating hole)

Size	6	10
Type		WMM
Max operating pressure (Bar)	315	350
Flow (L/min)	60	160



M-SEW

Poppet directional valves
Sizes 6, 10

Features:

Air-gap DC solenoids with detachable coil
Solenoid coil is rotatable by 90°
The coil can be changed without having to open the pressure-tight chamber
Electrical connection as individual connection
Optional auxiliary operating device

Size	6	10
Type		M-SEW
Max operating pressure (Bar)		630
Flow (L/min)	25	40



M-SED

Poppet directional valves
Sizes 6, 10

Features:

Direct operated directional seat valve with solenoid actuation
Safe switching also with longer standstill periods under pressure
Solenoid coil is rotatable by 90°
The coil can be changed without having to open the pressure-tight chamber
With concealed manual override, optional

Size	6	10
Type		M-SED
Max operating pressure (Bar)		350
Flow (L/min)	25	40



23QDF

Ball type solenoid valve
Sizes 6, 10

Features:

The ball type electromagnetic valve is used to realize leak free point control for two-way plug-in valve hydraulic system under the desired pressure drop and flow
It may also be used as control components for other executive device

Size	6	10
Type		23QDF
Max operating pressure (Bar)		315



LC/LFA

Cartridge valve for directional control
Sizes 16, 25, 32, 40, 50

Features:

Mounting type: As cartridge structure, encased in block
2 area ratio: 2 : 1 = A (annulus area = 50%)
14.3 : 1 = B (annulus area = 7%)
4 different springs
Valve poppet with or without damping nose
Control covers with built-in features like poppet valve, shutter valve, etc.

Size	16	25	32	40	50	63
Type						LC/LFA
Max operating pressure (Bar)						420
Flow (L/min)						



BPS1

Hydraulic Steering Unit
Sizes 50 to 400

Features:

High efficiency, long life, compact and convenient low pressure drops & steering torque ports available to DIN, ISO or SAE size 50 to 400cc/rev available with built-in valve functions shock, inlet check suction and relief valves, according to European & US standards, extensively used in forklift, tractor, combines and loaders.

Size	50 ~ 400
Type	BPS1
Max operating pressure (Bar)	175

FOR INDUSTRIAL & MOBILE APPLICATIONS

Controlling & Connecting Mobile Machines



HYDRAULIC DIRECTIONAL VALVES



P40/P80

Monoblock directional control valve
Sizes 1 to 6

Features:

Manually or mechanically controlled hydraulic directional control valve P40/P80 are designed for distribution and control the flow of oil between pump and the cylinder / hydro-motor etc. It is manufactured with 1 to 6 spools, with parallel or series function, with common or individual back valve for each spool, with or without safety valve.



CHECK VALVES



"S" series

Check free flow valve
Sizes 6, 8, 10, 15, 20, 25, 30

Features:

Preferably close a flow leak free in one direction and to permit free flow in the opposite direction
5 cracking pressures
3 mounting types: Sub-plates mounting, Threaded connection, cartridge connection.

Size	6	8	10	15	20	25	30
Type	"S"						
Max operating pressure (Bar)	315						



SV/SL

Pilot operated check valve
Sizes 10, 20, 30

Features:

With or without leakage port
With or without pre-opening
4 opening pressures
2 mounting types:
Sub-plates mounting, Threaded connection

Size	10	20	30
Type	SV/SL		
Max operating pressure (Bar)	315		
Flow (L/min)	150	350	550



Z1S

Check valve
Sizes 6, 10

Features:

Preferably closing a flow free in one directional and to permit free flow in the opposite direction.
Sandwich plate valve for use in vertical stacking assemblies.

Size	6	10
Type	Z1S	
Max operating pressure (Bar)	315	
Flow (L/min)	40	100



Z2S

Pilot operated directional valve
Sizes 6, 10, 16, 22

Features:

For leakage-free closure of one or two actuator parts, sandwich plate valve for use in vertical stacking assemblies.

Size	6	10	16	22
Type	Z2S			
Max operating pressure (Bar)	315			
Flow (L/min)	60	120	300	450

We serve our customers right



HYDRAULIC PRESSURE VALVES



DA/DAW

Pilot operated cut-off valve
Sizes 10, 20, 30

Features:

For subplate mounting
As cartridge valve
4 adjustment types, optionally:
• Rotary knob
• Adjustment spindle with protective cap
• Lockable rotary knob with scale
• Rotary knob with scale
Solenoid-operated unloading via built-on directional spool valve

Size	10	20	30
Type	DA/DAW		
Max operating pressure (Bar)	315		
Version 10%	40	80	120
Version 17%	60	120	240



DB/DBW

Pilot operated pressure relief valve
Sizes 10, 15, 20, 25, 30

Features:

For subplate mounting
For threaded connection
Solenoid-operated unloading via built-on directional spool valve or directional poppet valve
High-power solenoid
Switching shock damping, optional
Corrosion-protected design

Size	10	15	20	25	30
Type	DA/DAW				
Max operating pressure (Bar)	350				
Flow (L/min)	250	500	500	500	650



DBD...

Fixed Displacement Pump/Motor
Sizes 6, 8, 10, 15, 20, 25, 30

Features:

As screw-in cartridge valve (cartridge)
For threaded connection
For subplate mounting
Adjustment type for pressure adjustment, optionally:
• Sleeve with hexagon and protective cap
• Rotary knob
• Hand wheel
• Lockable rotary knob

Size	6	8	10	15	20	25	30
Type							
Max operating pressure (Bar)	400	630	315				
Flow (L/min)	50	120	250	350			



DB...K

Pilot operated pressure relief valve
Sizes 5, 6, 10

Features:

4 pressure ranges (in bar): 50, 100, 200, 315
4 pressures adjustment elements, optional
Mounting type: Cartridge connection

Size	6	10	20
Type	DR...K		
Max operating pressure (Bar)	315		
Flow (L/min)	50	120	120



DR...DP

Pilot operated pressure relief valve
Sizes 5, 6, 10

Features:

For subplate mounting
5 pressure ratings
4 optional adjustment types:
• Rotary knob
• Threaded pin with hexagon and protective cap
• Lockable rotary knob with scale
• Rotary knob with scale
Check valve, optional
Corrosion-protected design

Size	5	6	10
Type	DR...DP		
Max operating pressure (Bar)	315	210	210
Flow (L/min)	15	60	80



DZ....DP

Direct operated sequence valve
Sizes 5, 6, 10

Features:

For subplate mounting
4 pressure ratings
4 adjustment types:
• Rotary knob
• Threaded pin with hexagon and protective cap
• Lockable rotary knob with scale
• Rotary knob with scale
With pressure gauge connection
Check valve, optional

Size	5	6	10
Type	DZ....DP		
Max operating pressure (Bar)	315	210	210
Flow (L/min)	30	60	80



LC....DB

Cartridge valve for relief control
Sizes 16, 25, 32, 40, 50, 63

Features:

Mounting type:
As cartridge structure, encased in block
With or without throttle elementpoppet valve, spool valve

Size	16	25	32	40	50	63
Type	LC....DB					
Max operating pressure (Bar)	420					

HYDRAULIC PRESSURE VALVES



ZDR

Direct opt. pressure reducing valve
Sizes 6, 10

Features:

Sandwich plate design
4 pressure range (in bar) 25, 75, 150, 210
Pressure reduction in ports A, B or P
Check valve optional

Size	6	10
Type	ZDR	
Max operating pressure (Bar)	210	
Flow (L/min)	30	50



ZDB/Z2DB

Pilot operated pressure relief valve
Sizes 6, 10

Features:

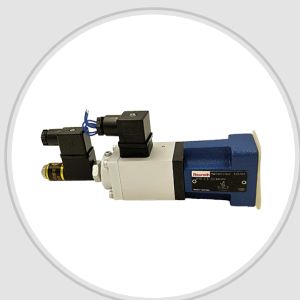
Sandwich plate valve
With one or two pressure relief cartridges
4 pressure ranges, 50, 100, 200, 315
3 pressure adjustment elements, optional
5 circuit options (size 6) or 6 circuits options (size 10)

Size	6	10
Type	ZDB/Z2DB	
Max operating pressure (Bar)	315	
Flow (L/min)	60	100

*HIGH PERFORMANCE,
HIGH SUPERIORITY.*



HYDRAULIC PROPORTIONAL VALVES



2FRE

Proportional flow control valve 2-way
Sizes 6, 10, 16

Size	6	10	16
Type	2FRE		
Max operating pressure (Bar)	210	315	315
Flow (L/min)	25	60	160

Features:

According to electrical command value controlling the value flow of a hydraulic fluid with a pressure compensator for the pressure compensated control of a flow actuation via a proportional solenoid
With electrical position feedback of the control orifice Both valve and electronic control from one supplier. Flow control is possible in both directions by using a rectifier sandwich plate
Mounting type: sub-plate mounting



3DREP

Proportional Pr. reducing valve of 3 way
Sizes 6

Size	6
Type	3DREP
Max operating pressure (Bar)	100
Flow (L/min)	15

Features:

The 3 way pressure reducing valve is directly actuated by proportional solenoids, limiting a system pressure. Wet pin DC proportional solenoids. Both valve and electronic control from one suppliers.
Mounting type: Sub plate mounting
Delay components <3
Repeatability Precision <1
Electronic control with 1 ramp times VT-3000S30
Electronic control with 5 ramp times VT-3006S30



4WRA

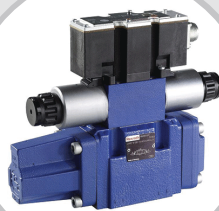
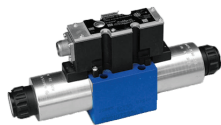
Proportional directional valves
Sizes 6, 10

Size	6	10
Type	4WRA	
Max operating pressure (Bar)	315	315
Flow (L/min)	43	95

4WRE(E)

Proportional directional valves
Sizes 6, 10

Size	6	10
Type	4WRE(E)	
Max operating pressure (Bar)	315	315
Flow (L/min)	80	180



4WRZ(E)

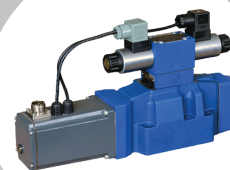
Proportional directional valves
Sizes 6, 10

Size	10	16	25	32
Type	4WRZ(E)			
Max operating pressure (Bar)	315			

4WRKE(E)

Proportional directional valves
Sizes 10, 16, 25, 32

Size	10	16	25	32
Type	4WRKE(E)			
Max operating pressure (Bar)	350			
Flow (L/min)	170	460	870	1600



HYDRAULIC PROPORTIONAL VALVES

HYDRAULIC CRITICAL APPLICATION SEGMENT



4WRPEH6/10

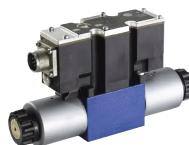
Servo solenoid prop. valve
Sizes 6, 10

Size	6	10
Type	4WRPEH	
Max operating pressure (Bar)	315	
Flow (L/min)	40	100

EFBG

Prop. pressure and flow valve
Sizes 02, 03, 06, 10

Size	02	03	06	10
Type	EFBG			
Max operating pressure (Bar)	315			



4WRAE

Proportional directional valves
Sizes 06, 10

Size	06	10
Type	4WRAE	
Max operating pressure (Bar)	315	315

EDG

Proportional directional valves
Sizes 01

Size	01
Type	EDG
Max operating pressure (Bar)	315



AIR OIL COOLER

Used in: Machine tools, special-purpose machinery, engineering machinery, tunnel and port machinery, hydraulic power station & lubricating system.

Features:

The product is designed to achieve the best cooling effect with 35bar dynamic axial flow fan and tightly structured high-efficiency fan, single-fan cooling or double fan cooling is available according to the heat generation of the system, standard for oil inlet and outlet: PT (RC) screw thread; other threads can be custom-made, operating voltage: AC110V, AC220V, AC380V, DC12V and DC24V, in case that special voltage is required please contact Ambica.

Models: AJ0510, AWO607, AHO608, AH1012, AH1245, AH1417, AH1890



HYDRAULIC FLOW CONTROL



2FRM

2-way flow control valve
Sizes 5, 6, 10, 16

Features:

For maintaining a continuous set flow, independent of pressure and temperature Lockable key optional. External closing of the pressure compensator optional. Check valve optional. A rectifier sandwich plate type Z4S should be fitted below to control a flow through the valve in both directions. For sub plate mounting:

Size	5	6	10	16
Type	2FRM			
Max operating pressure (Bar)	210	315	315	315
Flow (L/min)	15	25	50	160



DV/DRV

Throttle check valve
Sizes 6, 8, 10, 12, 16, 20, 25, 30, 40

Features:

For setting and shutt-off flow of fluid Throttle valve type DV and throttle check valve type DRV 2 mounting type sub-plate mounting-threaded connection

Size	6	8	10	12	16
Type	DV/DRV				
Max operating pressure (Bar)	350				
Flow (L/min)	20	50	60	85	180
Size	20	25	30	40	
Type	DV/DRV				
Max operating pressure (Bar)	350				
Flow (L/min)	300	300	300	300	



MG/MK

Throttle and throttle check valve
Sizes 6, 8, 10, 15, 20, 25, 30

Features:

Suitable for direct in line mounting Pressure and viscosity dependent Throttle valve type MG and throttle check valve type MK Mounting type: Threaded connection

Size	6	8	10	15
Type	MG/MK			
Max operating pressure (Bar)	315			
Flow (L/min)	15	30	50	125
Size	20	25	30	
Type	MG/MK			
Max operating pressure (Bar)	315			
Flow (L/min)	200	300	400	



Z2FS

Double throttle check valve
Sizes 5, 6, 10

Features:

For limiting the main or pilot fluid flow of 2 actuator connections For meter-in or meter-out control Sandwich plate valve

Size	6	10	16	22
Type	Z2FS			
Max operating pressure (Bar)	315			
Flow (L/min)	15	50	125	200



PARTICLE BOARDS & MDF PRODUCTION LINE

We offer an entire range of machinery equipments for manufacturing the finest quality of particle boards and MDF / HDHMR.

Our production equipment is capable of supporting medium and high-density fiberboard manufactured using premium wood and plant fiber as raw materials.

With our complete set of equipments, you will achieve boards with light and smooth surfaces and a uniform structure, that are long-lasting and can substitute natural plants. Depending on the purpose, we provide 4 feet, 6 feet, and 8 feet full set of continuous press production lines.



SS PLATES

We deal in a complete range of stainless-steel press plates for pre-laminated boards. Besides offering an array of options, we also customized the texture and thickness of the plates as needed.



*WE
KNOW
THE
POWER
OF
QUALITY.*



BEARING

We are a leading provider of high-quality ball and roller bearings for a large variety of industrial purposes. Our bearings are known for their massive load-taking capacities while reducing mechanical friction, and maximizing performance and productivity.

DEEP GROOVE BALL BEARINGS

THIN SECTION BEARINGS

SPINDLE BEARINGS

SELF-ALIGNING BALL BEARINGS

FOUR POINT CONTACT BEARINGS

ROLLING BEARINGS



LUBRICANTS

We deal in complete range of lubricants for industrial requirements, engineered to provide lubrication in extreme conditions, ensuring smooth performance and long life of machinery equipment. Some of the industries we cater include Woodpanel, Power Sector, Steel and Metal Working, Automotive, Textile, Sugar Mills, Paper Mills etc.

HYDRAULIC OIL

THERMIC FLUID

CUTTING OIL

GEAR OIL

TURBINE OIL

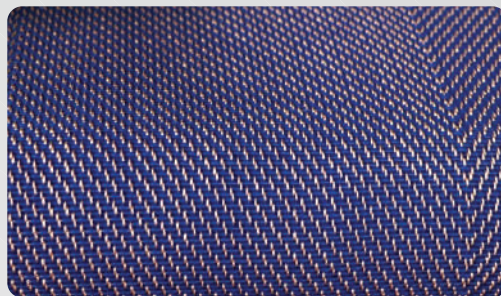
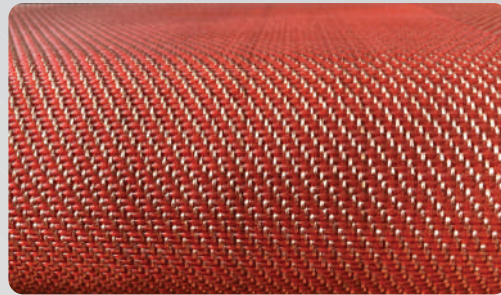
COOLANTS

GREASE



Cusion Pads

Our cusion pads are woven with industry-best imported silicone and twilled bunched copper. These pads area placed between the hot plate and the press plate in the short cycle hot press machine to buffer the pressure and transfer the heat and uniformly.



Our USPs



35+ years
experience



No stock
holding



More production
per pad



Immediate
delivery



Longer
life



All sizes available: 8x4,
8x6, 9x4, 9x6, 10x4, 10x6
or customized size



German quality
brought to you at
affordable prices



Roll packing available
to save cost on extra
cushion pads



Best workmanship
and material used

Name	Cushion Pad for Short Cycle Lamination Press
Material	Copper Wire and Silicon Rubber
Service Life	80,000 to 1,00,000 Boards
Copper Wire Quantity	13 Wires
Feature	Great anti-factigue performance High buffer performance Uniform heat transfer Long service life Heat resistance
Size	8' X 4' (2800mm X 1470mm) 8' X 6' (2800mm X 2100mm) 9' X 4' (3200mm X 1470mm) 9' X 6' (3200mm X 2100mm) Or can be customized as per your needs

INDIA'S FIRST MANUFACTURER

APPLICATIONS

Cushion pads are mainly used in the production of wooden floorings. These ensure even transmission of the working pressure and temperature on the hot platen so that the adhesion between the melamine paper and board becomes denser, smoother, and more uniform.



PROUD PARTNERSHIP WITH 800+ CLIENTS

We have partnered with some of the most prestigious clients in the country. We don't just believe in offering the best products and services, but also in forming strong relationships based on understanding the needs of our clients and boosting their productivity with innovative solutions.



OUR PRESENCE



JAIPUR
AHMEDABAD
KOLKATA
BENGALURU
NEPAL
BANGLADESH
AFRICA

Service that makes a difference

BRANDS WE DEALS IN

VAKO SEALS PVT. LTD.

rexroth
A Bosch Company

Huade

NACHI

polyhydron

hydroline
PRODUCTS

VOITH

kyros™

FAG **I INA A**

Gates

KSB



Ambica Engineers & Lubricants Pvt. Ltd.

C-1114, KLJ Noida One,

Block: B, Plot No: 8, Sector-62, Noida-201301, UP, INDIA

☎ Phone: +91 120 3611801 ✉ Email: info@ambicaengineers.in

📘 facebook.com/ambicaindia/ 📷 instagram.com/ambicaengineers/



— www.ambicaengineers.in —