



# PARTICLE | MDF

## SCREW PUMP

Feed and transfer  
any fluid/liquid

## DOSING PUMP

Chemical Dosing Pump  
Rotary Gear Pump

## MAIN PUMPS

'CY' Series Pump  
'YB-D' Vane Pump

## GEAR MOTOR

Worm & Helical  
Speed Reducer  
Planetary Drive

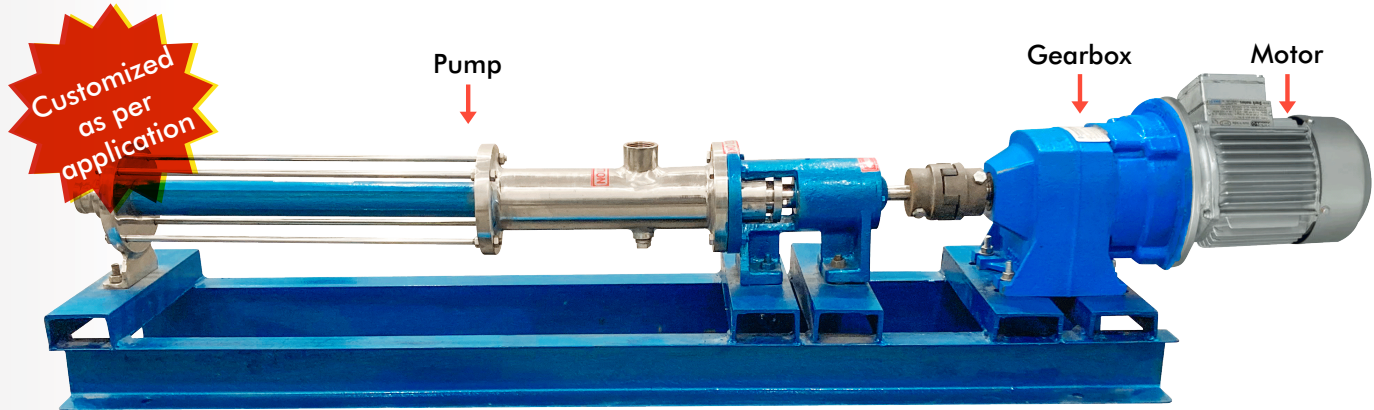
## EQUIPMENTS & ACCESSORIES

SS PLATES  
BALL VALVE  
CUSHION PAD

SS HOSE  
SS CLAMPS  
MANOMETER



## SCREW PUMP



### Specifications

Max. Pressure: 350 kg/sq.cm.  
Metering Accuracy: +3%  
Stroke setting: 10 % to 100%  
Max. Flow rate: 0 to 7000LPH  
Repeatability: +2.5% of set point

### CHEMICAL DOSING PUMP

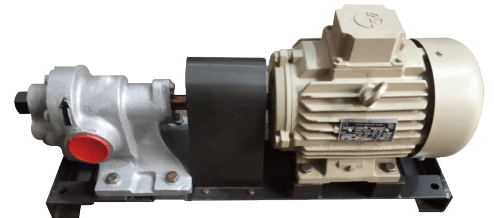
A plunger pump is a kind of positive displacement pump. Such pumps are frequently used to transfer industrial and municipal sewage. Plunger type pumps are mostly used at higher pressures. They are durable and resistant in nature. These pumps are also known as well service pumps, high viscosity pumps or high pressure pumps. They are designed to deliver high pump pressures.

## ROTARY GEAR PUMP UNIT

Rotary Gear Pumps are available in various sizes and versions to suit every possible viscous fluid pumping applications. Rotary external gear pumps are designed for low to high viscosity range, free from abrasive particles and corrosive substance. Rotary Gear Pumps designed for low to medium pressure ranges.

### Specifications

Size: 1/2" to 6"  
Capacity: 20LPM to 3000LPM  
Discharge Pressure upto 15kg/cm  
MOC: Cast Iron, SS304/316 etc.  
Temperature upto 250°C  
Viscosity: 50cst to 75000cst



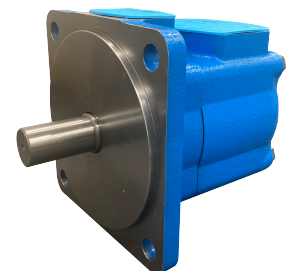
## ELECTRONIC DOSING PUMP

Electronic Dosing Pumps are decisively tried on grouped parameters for conveying an impeccable reach. These dosing pumps are created with finest nature of material as per business models. Electronic Dosing Pumps are in confirmation with the high standard of quality and known for its efficient performance, heavy duty performance, low operating cost, and longer service life. This pump is electronically actuated diaphragm type dosing pump.



## "CY" SERIES PUMPS

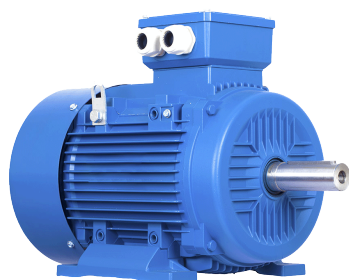
The axial piston CY14-1B hydraulic pump is equipped with hydrostatic film lubrication of the bearing. It has the advantages of being small in size, light in weight, high in efficiency, long in life, simple in construction, and simple to maintain. This hydraulic pump has a nominal displacement of (2.5, 10, 25, 63, 160, 250, 400)ml/r, a rating pressure of 250Bar, a maximum pressure of 315 Bar, and a speed of 1000 and 1500rpm.



## "YB-D" VANE PUMPS

"YB-D" Series are high performance vane pump with long life for medium pressure application.  
High volumetric efficiency upto 92% @120bar  
Maximum operating pressure up to 120bar  
Twelve Vane Design for quite operation  
Versatile, rugged and optimized design  
Compact, Four flow option  
Cartridge design





## Specifications

Power: 0.5HP to 100HP  
Phase: Single or Three Phase  
Speed: 1440 to 3000rpm  
Voltage: 230V/420V

## ELECTRIC MOTOR

We provide motors which are of the totally enclosed and open drip proof, single or three phase squirrel cage type, built to comply with international IEC and EN standards. Motors conforming to other national and international specifications are also available on request. We have well known brands like ABB, Crompton, Bharat Bijlee Motors available in stock.



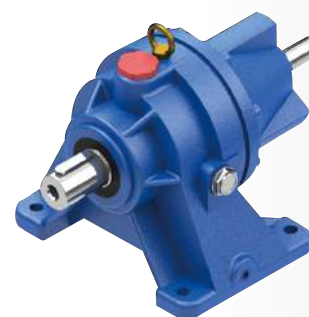
## WORM SPEED REDUCER

Worm gearboxes provide high torque with low speed gear ratio. Being simple and compact in design, these gears can achieve higher gear ratio than the helical gears. These worm reduction gears having screw type qualities are similar to helical gears, but its helix angle is typically comparatively larger and its body is normally quite long in the axial direction. The gears in these gearboxes can be right or left-handed depending upon the purpose.



## HELICAL SPEED REDUCER

Our range of helical, helical bevel, spiral bevel gearboxes can be easily configured to industrial process parameters thanks to a high range of gear transmission ratios. The high level of efficiency of our gearboxes ensure an ideal drive package that meets demanding requirements of the industry. In connection with three-phase AC and servo motors, helical gearboxes form an extremely compact unit. They are available in a 3 and 4 stage design with high torque and wide range of gear ratios.



## PLANETARY SPEED REDUCER

It is compact and powerful. Their planetary drive train makes them the ideal choice for all severe duty applications where shock loads and impacts are more the rule than the exception. The product configuration is highly versatile, due to several options for mounting, gear layout, output shaft and motor interface. All the features are available for each of the 20 finely spaced frame sizes, with a torque range of 1,000 to 1,100,000 Nm.





### GLOBE VALVE

Globe valves are primarily used to stop and initiate flow (block or on-off valves), although some designs can be used for basic manual throttling. The best manual valves for on-off services are those that allow the flow to move directly through the body, with a full field off element that presents little or no pressure drop.

Size: ½" up to 24"

MOC: Cast Steel, Stainless Steel 304/316 etc.



### SS CLAMPS

SS Clamps used to hold the plates and cushion pad in the short cycle press.

### CUSHION PAD/ PRESS PAD

Our Cushion Pads are woven by Imported Silicone, the chemical industry's world leader & twilled Bunched Copper. Cushion Pads are used in short cycle hot press to buffer the pressure and transfer the heat. It is placed between the hot platen and the press plate in the short cycle hot press machine.

#### Specifications

Material: Copper Wire and Silicone Rubber

Breaking Elongation: 310%

Silicone Color: Off-white

Working Temperature: -40°C~280°C

Working Pressure: 10~40mPa

Copper Wires Quantity: 13 Wires

Size: 8' X 4' (2800mm X 1470mm)

8' X 6' (2800mm X 2100mm)

9' X 4' (3200mm X 1470mm)

or can be customized as per your needs



### SS HOSE PIPE

We offer a wide range of corrugated flexible hose and wire braiding in authentic stainless steel grades 304, 304L, 321, 316L and 316Ti. We also cater to various requirements through our customized products of stainless steel hose in flexibility class A, B and C in sizes 1/4" (6mm) to 12" (300mm).

Two-Ply Hose is also available in our range.

Customized size options are also available as per application.



## SS PRESS PLATES

Stainless Steel Press Plates available in various finishes like MATT, SUEDE and GLOSSY.

We know how important texture, finish and design are in the ever evolving decorative laminate industry. It all starts with the very critical substrate, this is the reason we offer hardened stainless steel plates for decorative laminates and for low-pressure laminates / Prelam boards.

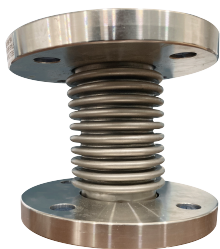
We offer you around 500 textures - wood grain etc. Help you in select most suitable textures for your specific market.



## WHY AMBICA?

"AMBICA" one of India's leading & reputed manufacturer & exporter of Wood Panel Machinery, Hydraulic Spare Parts & Lubricant Products since 1982. The brand has set the highest benchmarks in quality & workmanship. We are associated with some of the top companies across the trade to offer our clients with complete production line of Particle Board / MDF & OSB with superior functionality and the highest performance industry standards.

We are proud to be partnered with some of the most prestigious clients in the country. We don't just believe in offering the best products and services, but also in forming strong relationships based on understanding the needs of our clients and boosting their productivity with innovative solutions.



### SS EXPANSION BELLOW

Bellows are a flexible pipe element. The corrugation of the expansion joint is designed to be flexible in order to absorb pipe expansion and contraction due to changes in temperature. The number of corrugation of bellows is decided according to the displacement amount and the expansionary and contracting force that the bellows have to absorb. Bellows have to be strong to the design pressure and operating pressure of piping and installation.



### TIME RELAY

Time Delay Relay used in industrial automation system and mechanical equipment to delay component. Relay is a kind of automatic electric switch, when supply with an input value, like electric, magnetic, light or thermal signal, it will transfer the controlled circuit automatically and make an abrupt change, when the input value decreased to certain degree, it will resume to former state and make the controlled circuit back to the former state.



### MANOMETER

Pressure gauges with electrical contacts, these incorporate a mechanical magnetic snap action contact mechanism in to an analogue pressure indicator. They generate ON and OFF electrical signals at preset value of measurement. These signals can be used to activate or deactivate buzzer, alarm, pilot lamp, control motor, pump, valve or any other process which requires controlling. Point of actuation is adjustable between 10% to 90% of FS.



### 3/4 WE6 or 10 DIRECTIONAL VALVE

The 4WE6 or 10 directional valves are solenoid operated directional spool valves. They control the start, stop and direction of flow. It is unnecessary to open the pressure tight chamber when changing the coil.

Under urgent situation, the spool can be derived by hidden hand override.



### 4WEH DIRECTIONAL VALVE

- Types of actuation (internal or external pilot control):
  - Electro-hydraulic (type WEH)
  - Hydraulic (type WH)
- For subplate mounting
- Spring or pressure centering, spring end position or hydraulic end position
- Wet-pin DC or AC solenoids, optional



### 2FRM6 FLOW CONTROL VALVE

- Location of the ports according to DIN 24340 form A
- External closing of the pressure compensator, optional
- Check valve, optional
- 2 adjustment types, optional:
  - Rotary knob with scale
  - lockable rotary knob with scale



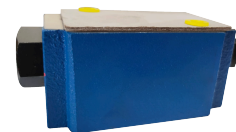
### 23QDF BALL TYPE SOLENOID VALVE

23QDF- The ball type electromagnetic valve is used to realize leak-free pilot control for two-way plug-in valve hydraulic system.

Under the desired pressure drop and flow features, it may also be used as control components for other executive device.

The valve core adopts high quality precision steel ball without axial length.

**HOT SELLING  
PRODUCTS  
AVAILABILITY  
READY STOCK**



### Z2S CHECK VALVE

Sandwich plate valve for use in vertical stackings

- For the leakage-free blocking of one or two actuator ports, optional
- Various cracking pressures, optional
- With pre-opening, optional
- Check valve installation sets available individually



### DBDS PRESSURE RELIEF VALVE

23QDF- The ball type electromagnetic valve is used to realize leak-free pilot control for two-way plug-in valve hydraulic system.

under the desired pressure drop and flow features, it may also be used as control components for other executive device.



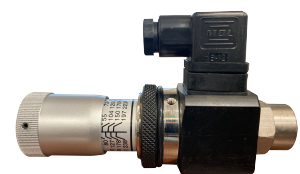
### RCF PREFILL & EXHAUST VALVE

RCF- Prefill & exhaust valve is widely used in the short cycle press.

Allows free flow from it's port A to port B.

Flow from port B to port A can be had by applying pilot pressure to it's port X.

Opening and closing time of the valve can be influenced by providing Throttle / Check Valves in the X port line.



### PRESSURE SWITCH

Pressure switch s commonly used in power packs to control or set the level of pressure.

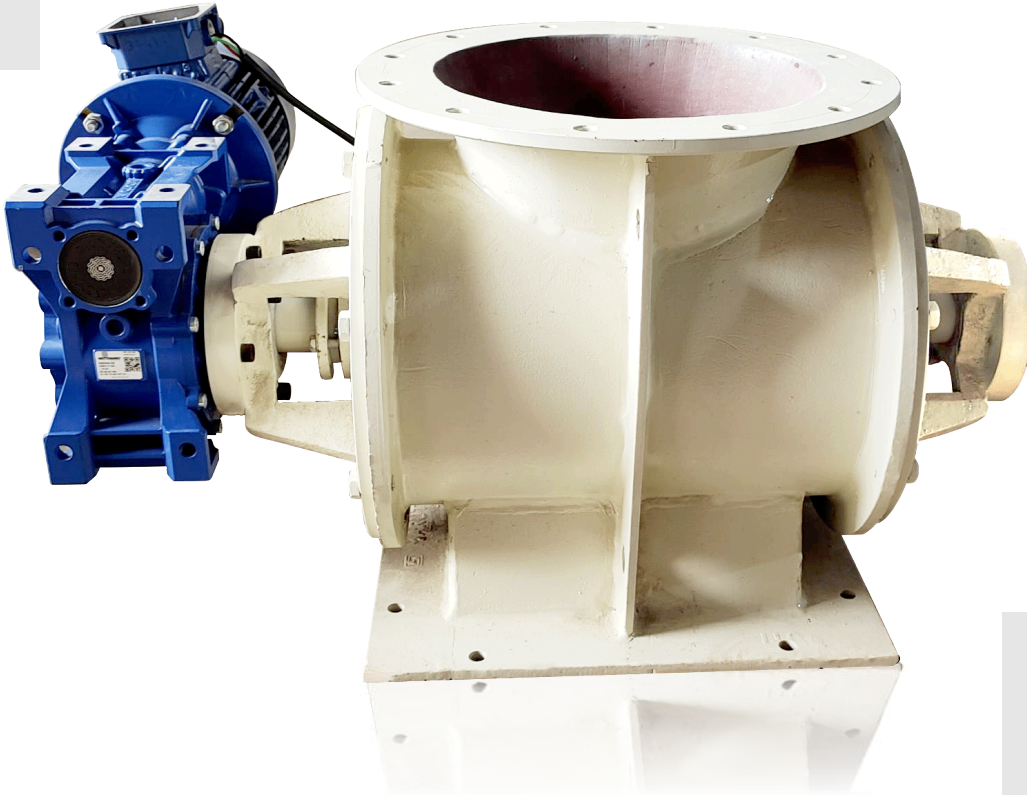
Connections are available in 1/4" PT, 1/4" NPT, 1/4" BSPP

Max. pressure upto 350Bar

Operational voltage or current is AC250V/3A and DC24V/20mA



# ROTARY AIRLOCK VALVE



## INTRODUCTION

The prime function of a rotary valve is to regulate the flow from one chamber to another while maintaining a good airlock condition. The product is mainly in dry powder or granular form.

In the dust filtration field good airlocks are essential on cyclone and bag filter applications in order that the manufacturer's quoted high dust collection efficiencies can be maintained. Airlocks are also important in the pneumatic conveying industry, where product is regulated into a high pressure conveying line while minimising air leakage.

With Ambica there are no double standards, all our standard valves are precision machined for close tolerances and minimal eccentricities. Pressure differentials to 20psi and temperatures to 400°C. We have made specials to handle temperatures covering 1200°C and pressures to 350psi.

## Features

- Maximum number of blades in contact with body at one time without affecting throughput.
- Good throat opening at valve entry allowing high pocket filling efficiency.
- Minimum clearance at rotor tips and sides with body.
- Packing gland type seals.
- Robust body adequately stiffened to prevent distortion.
- Maximising valve speed to 25 rpm -prolonging life.
- Heavy shaft diameters minimising deflection.
- Outboard bearings for non-contamination.
- Precision machining of components.

## INDUSTRIES WE SERVE

- Wood Panel (Plywood / HPL / PB & MDF)
- Paper Mill
- Sugar Mill
- Plastic & Polymer Industry
- Machine Tool Industry
- Cement Plants
- Steel Plants
- Automobile

## OUR CLIENTS



## AMBICA ENGINEERS & LUBRICANTS PVT LTD

C-1114, KLJ NOIDA ONE, BLOCK-B, PLOT NO. 8,  
SECTOR-62, NOIDA-201301, UTTAR PRADESH, INDIA

Tel: +91 120 3611801

E-mail: [info@ambicaengineers.in](mailto:info@ambicaengineers.in)

Website: [www.ambicaengineers.in](http://www.ambicaengineers.in)

FOLLOW US

